



M4 SERIES

INSTRUCTION MANUAL

GBB SYSTEM

PAY ATTENTION TO SAFETY
READ THIS INSTRUCTION FIRST BEFORE OPERATE



ABOVE 18+
Intended for users 18 years and older.

FOR AIRSOFT USE ONLY.

ABOUT BOLT AIRSOFT



BOLT products are designed innovatively as the brand new electronic gun that pursues the goal of the perfection in Recoil Simulator. In order to enable realistic GBB recoil simulator and AEG's sustained firing (shooting) joys simultaneously for survival game players and military collectors, BOLT Recoil Shock System (B.R.S.S.) is here created.

ABOUT MAS SYSTEM



MEGA AIRFLOW SYSTEM

Over the past 12 years, BOLT has been dedicated to developing electric guns with realistic recoil and has achieved significant accomplishments, winning the favor and admiration of players worldwide. As a result, BOLT has held a pivotal position in the recoil toy gun market.

As a player himself, Tomy Lee deeply understands the needs and expectations of players. His most important challenge is to enhance the realism of the recoil and the performance of the guns to provide an exceptional user experience.

After two years of research and development and significant financial investment, BOLT has successfully developed the most advanced gas blowback rifle (BOLT GBB RIFLE) to date. This gun system, like the B.R.S.S., is globally patented and features stronger recoil, superior gasification efficiency, and higher firing rates. Its bolt catch function is also more precise and reliable, fully meeting the ideal needs of players. This is the BOLT GBB RIFLE. NAMED **MEGA AIRFLOW SYSTEM**.

ATTENTION WARNING

This sport gun is developed for enjoying sport shooting through correct sport shooting operation. You can experience unique feel of the airsoft gun, which is a most suitable sport goods to improve your shooting sense, if you recognize it's features and operational warnings.

As the airsoft gun has the capacity to shoot bb pellets by 50 to 60 meters, careless shooting and wrong operation are dangerous, causing eye damage or other injury. Make sure to read through warnings stipulated below and observe rules and manners for pleasant sport shooting.

Operation of this airsoft gun for competition use is restricted to users of 18 years old or more. Careless shooting and wrong operation are dangerous, causing eye damage other injury.

ATTENTION



Always wear eye protective gear.



Never shoot the air gun at places where people and cars pass cross.



Never shoot the airsoft gun towards a person or animal.



Always put the gun in a case or bag when you are carrying it.



You may be punished if you are shooting for a practical joke.



Store the air gun at places out of reach by children



Always attach the protective plug to the gun muzzle.



BB bullets may be shoot out even if the magazine is removed.



Never look into the gun muzzle.



Always set the selector lever to the safety position.



Avoid pulling the trigger carelessly.



Release put away your fingers from the trigger except when you are ready to shoot a target.



Always direct the muzzle towards a safe direction.

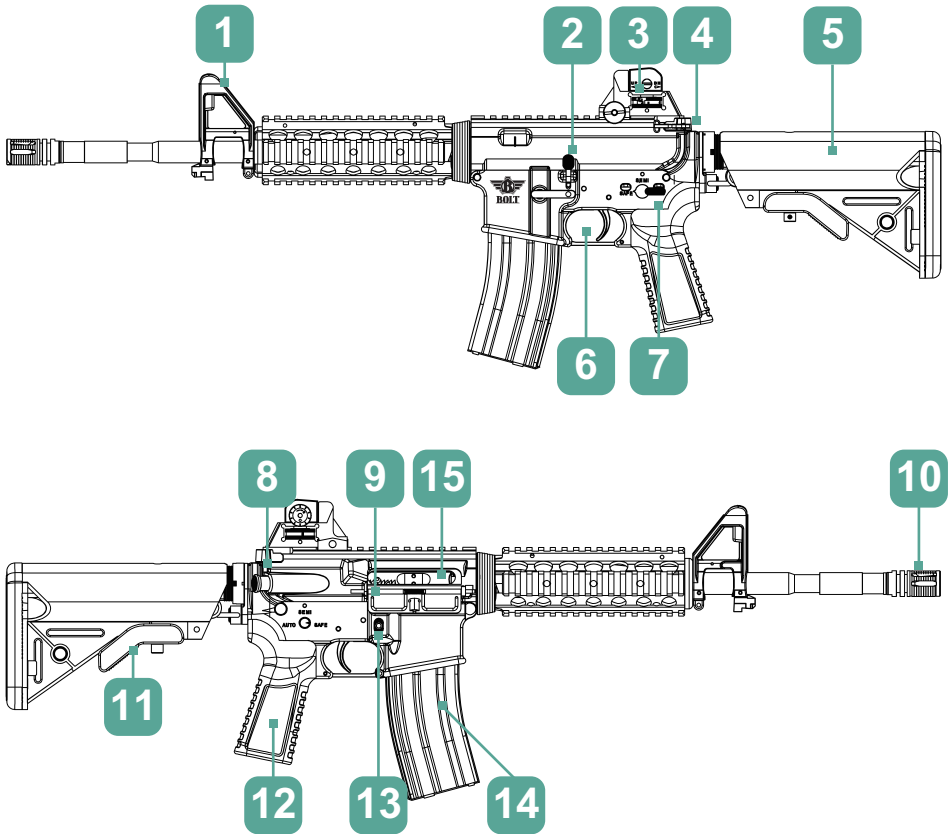


Never disassemble or modify the air gun.



Do not use in high temperatures (above 40°C).
Do not strike or heat the magazine or gas canister.

COMPONENT NAME



The parts diagram is for reference only; please refer to the actual product.
(Specifications may vary depending on the product model and export location)

COMPONENT NAME

1 Front Sight (Up.Down)

9 Dust Cover

2 Bolt Catch

10 Flash Hider

3 Rear Sight

11 Stock Lever

4 Charging Handle

12 Grip

5 Stock

13 Magazine Release Button

6 Trigger

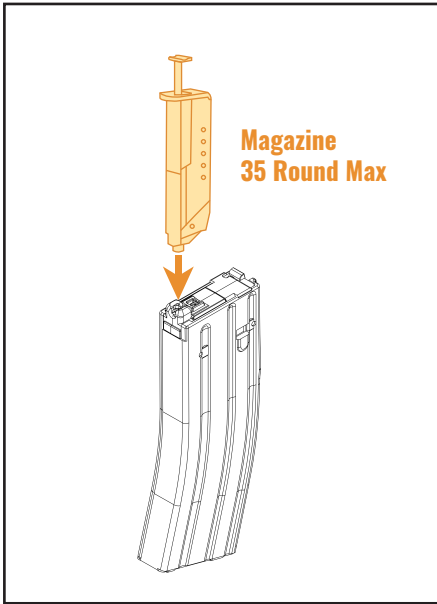
14 Magazine

7 Selector (Switch)

8 Ejector Button (Dummy)

MAGAZINE

FEEDING THE BBS



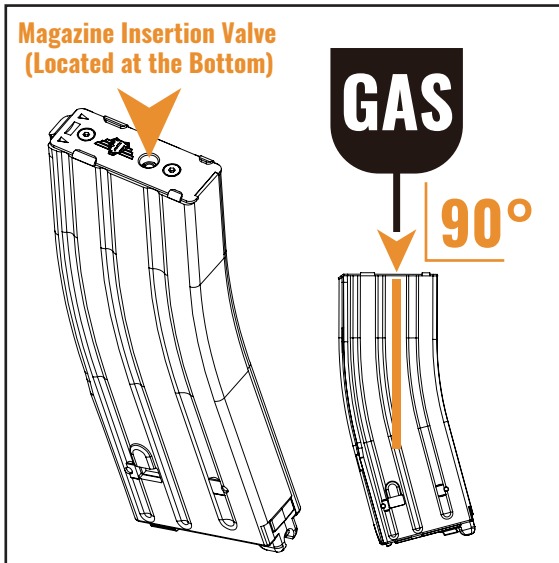
Use the speed loader to load BB pellets at the designated position. (The use of the speed loader should follow the instructions provided by each manufacturer.)

To prevent bbs from getting stuck and the inner barrel from being damaged, please use 6.00mm precision BBs, do not use recycled, reused, or dusty BB pellets.



Special attention should be paid to the appropriate temperature, as gases become high pressure at high temperatures. Under these circumstances, usage can result in significant pressure on each component and may cause damage, please use the appropriate pressure gas. If the bolt action appears to operate slowly or the bolt action stopper is not engaged. The BB pellets may not fly far due to insufficient gas or lower magazine temperature. (When the magazine temperature is low, restoring it to 20-30°C will resume normal operation.)

INJECT GAS



Turn the gas canister upside down and align the nozzle vertically with the charging port of the magazine, ensuring the nozzle is aligned and fully inserted. Depress the gas canister to begin filling with gas. You will hear the sound of gas flowing into the magazine. Keep depressing to allow gas to continue flowing into the magazine, usually for about 5 to 15 seconds. The specific time may vary depending on the magazine capacity and the size of the gas canister. When the gas in the magazine reaches saturation, excess gas will overflow from the charging port. This indicates that the magazine is filled with gas and further injection is not possible. Please stop pressing the gas canister immediately and remove it to prevent over-inflation and protect the magazine.

If the magazine gas is insufficient, the bolt carrier may not fully travel forward or backward.

Must remove the magazine, fill it with gas, and then fire all remaining BB pellets.

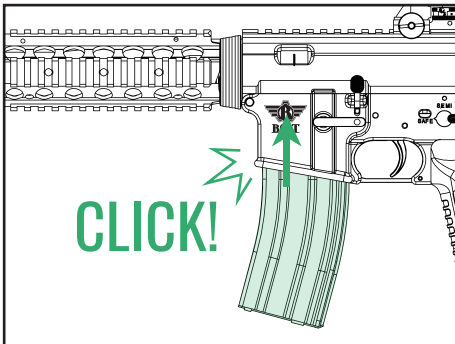
Caution: There is a risk of firing BB bullets if gas is injected without removing the magazine.

⚠ NOTES :

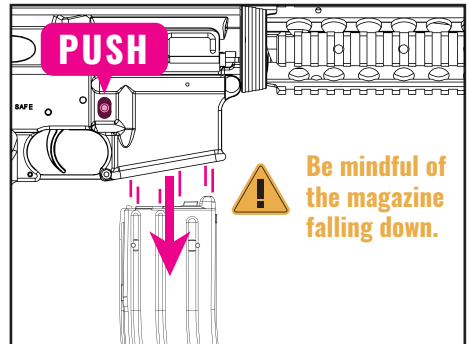
1. Do not use in high temperatures (above 40°C).
2. Please do not place in direct sunlight.
3. Please store in a place below 113°F (40°C).
4. Do not knock or heat the magazine and gas canister products.
5. Please keep out of reach of children.
6. Please do not use it in a confined space, and ensure good ventilation.
7. Flammable, keep away from fire, heat, and combustible materials.
8. Only to be used with gas guns, not for any other gas usage.

MAGAZINE

SETTING THE MAGAZINE AND LOADING



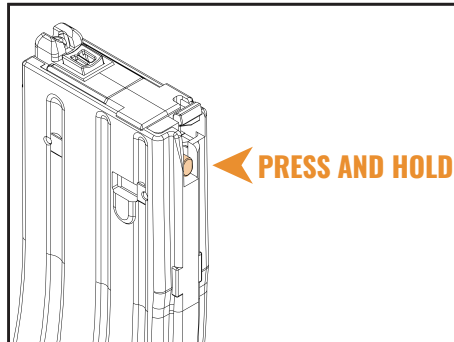
Make sure to set the magazine upwards and connect it firmly until a click sound is heard.



Press and hold the magazine release button to remove the magazine.

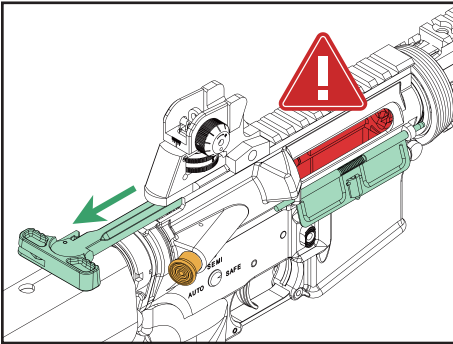


When removing the magazine, support it with your hand to prevent it from falling and getting damaged.



When storing the magazine after use, press and hold the gas release valve to release the gas.

CHARGING HANDLE FUNCTION



Pulling the lever will open the dust cover in tandem
Once opened, it needs to be manually closed.

If you need to adjust the HOP-UP or clear any
remaining rounds, please follow the instructions
on page 14 for your safety.

**Do not place your fingers near the bolt.
This device has strong recoil capability, so use it
carefully to avoid injury.**

DRILLING TEMPLATE DRAWING



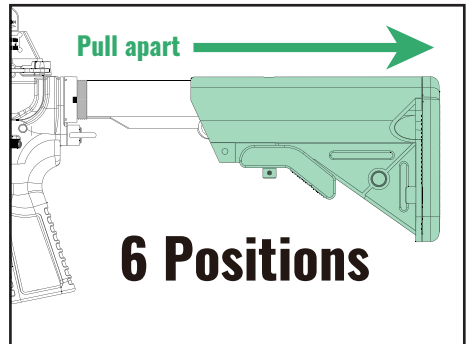
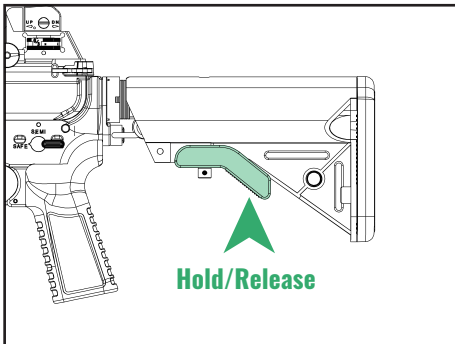
Notice: For users with machining capabilities only.

If you need to use a genuine-spec pull handle, please download the drilling template from the official
website and drill the required holes yourself.

Modifications required:

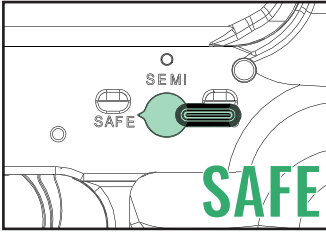
Trim the protrusions on both sides and the top. Drill a 2.1mm through-hole.s and the top. Drill a 2.1mm through-hole.

MOVABLE PARTS

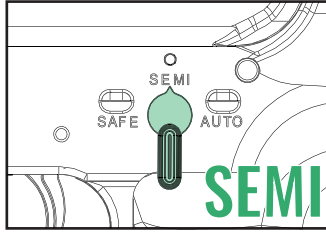


Press and hold the Stock adjustment lever and pull the stock to adjust the length. Release the stock
adjustment lever to fix the butt.

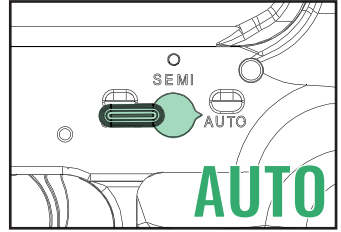
SELECTOR AND SAFETY-SETTING



When you are not firing the airsoft gun or during storage. Always set the selector to the safe position.

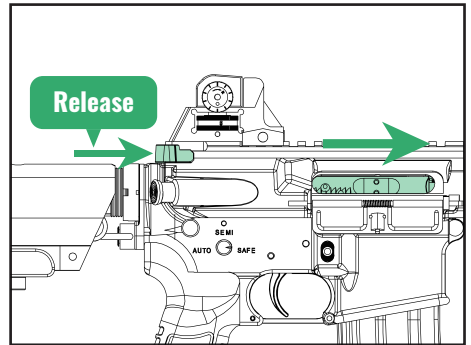
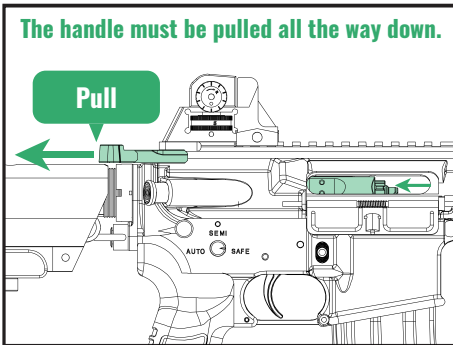


The airsoft gun will fire one shot each time when the trigger is pulled.

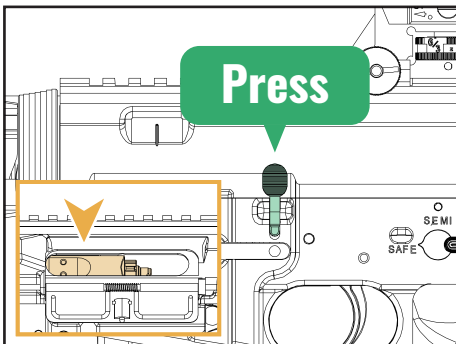


The airsoft gun will fire automatically while the trigger remains pulled.

FIRE

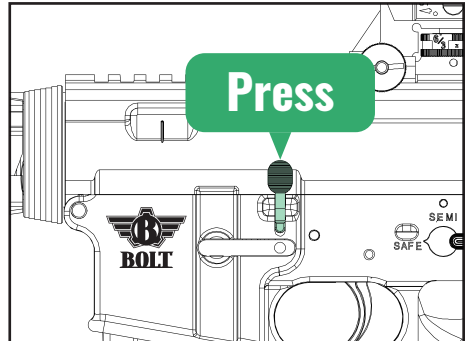
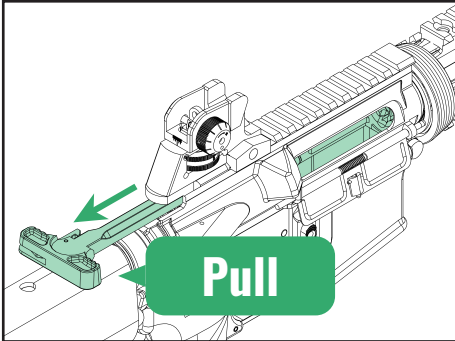


After preparing the magazine (P7), pull the charging handle all the way back and release it to chamber the BB pellets. Then, switch the selector to SEMI or AUTO to fire.



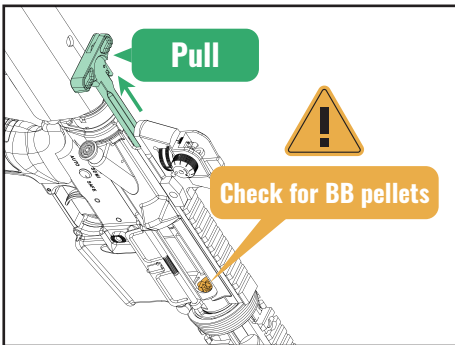
When preparing to fire or resuming firing, if the bolt is locked to the rear, press the bolt release button to release the bolt and continue shooting.

LOCK/RELEASE BOLT



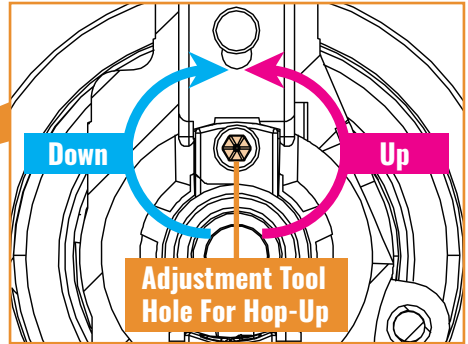
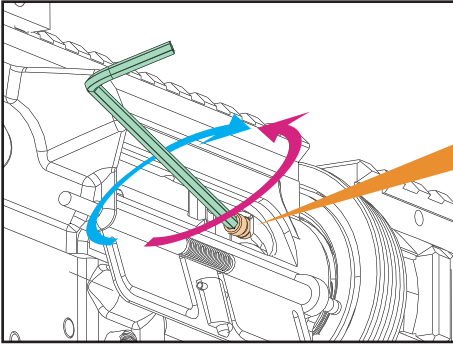
Pull the charging handle all the way back (do not release it), then press the bolt release button to lock the bolt to the rear. To send the bolt forward again, press the bolt release button once more.

RESIDUAL ROUNDS

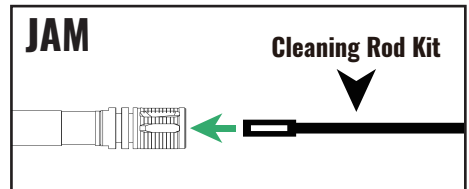


Point the muzzle downward and pull the charging handle to check the chamber and see if there are any remaining BB pellets. If there are remaining BB pellets, carefully remove them and watch for any jamming. If a jam occurs, stop using the gun immediately. Continuing to use it may lead to malfunction. To disassemble (P13), remove the magazine (P7), slowly insert the cleaning rod into the muzzle, and remove the BB pellets.

VARIABLE HOP-UP SYSTEM

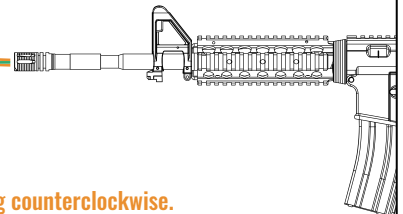


Pull the charging handle and use the bolt release button to lock the bolt to the rear (P11). Use a tool inserted into the hop-up adjustment hole to adjust the trajectory. Clockwise adjustment loosens the hop-up, causing the trajectory to descend. Counterclockwise adjustment tightens the hop-up, causing the trajectory to rise.

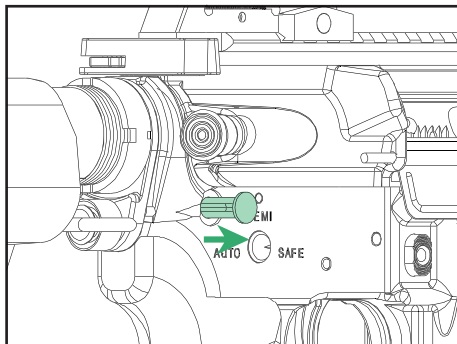
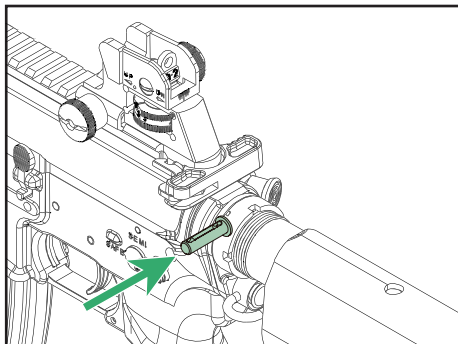


If a jam occurs, stop using immediately. Continuing to use it may cause malfunction. Disassemble (P13) and remove the magazine (P7). Slowly insert a cleaning rod from the muzzle to remove the BB pellets.

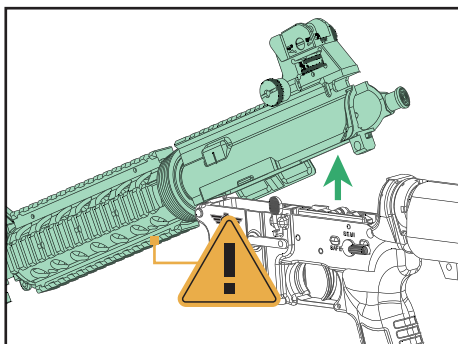
- If the trajectory is too high, loosen the hop-up by turning clockwise.
- — Best Trajectory —
- If the trajectory is too low, tighten the hop-up by turning counterclockwise.



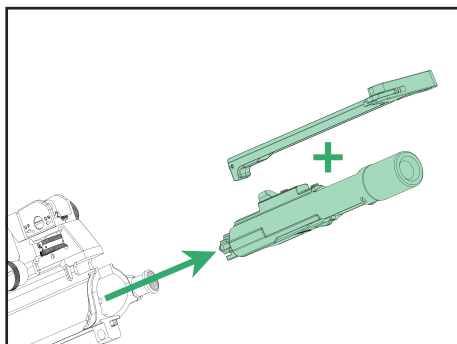
DISASSEMBLE



To assemble the upper and lower receivers, knock out the pin.

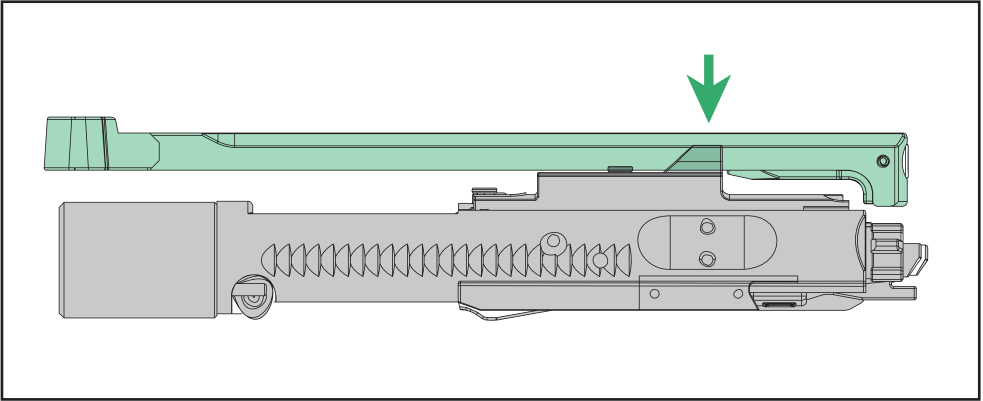


When opening the upper receiver, please be mindful of the handguard or charging handle to avoid damaging the lower receiver.



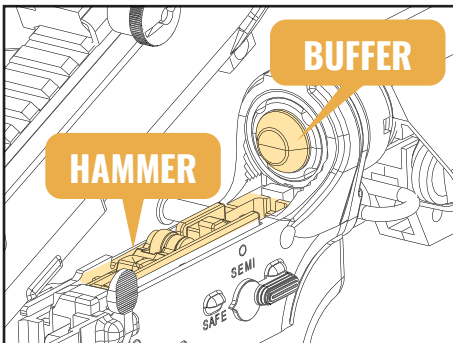
After opening the upper receiver, you can remove the charging handle and bolt carrier together.

DISASSEMBLE

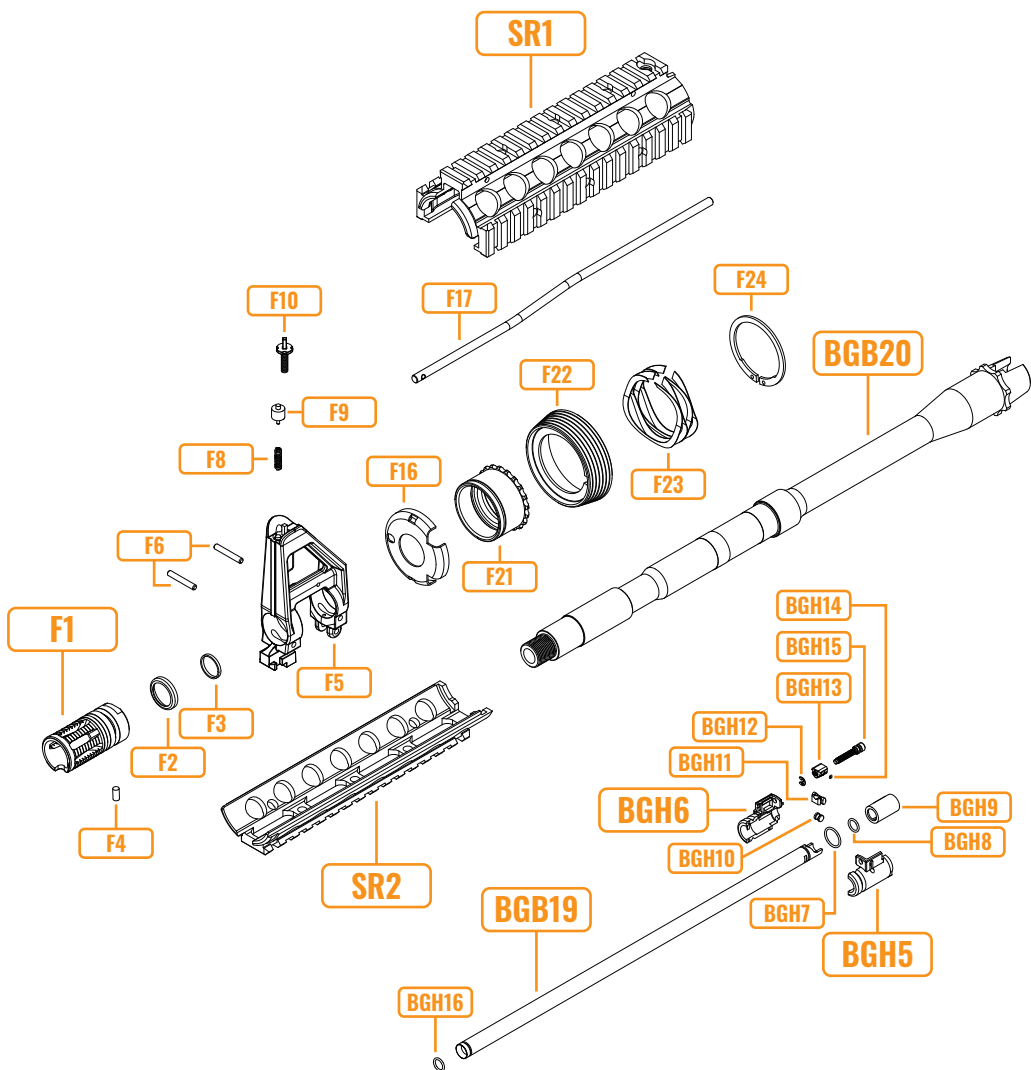


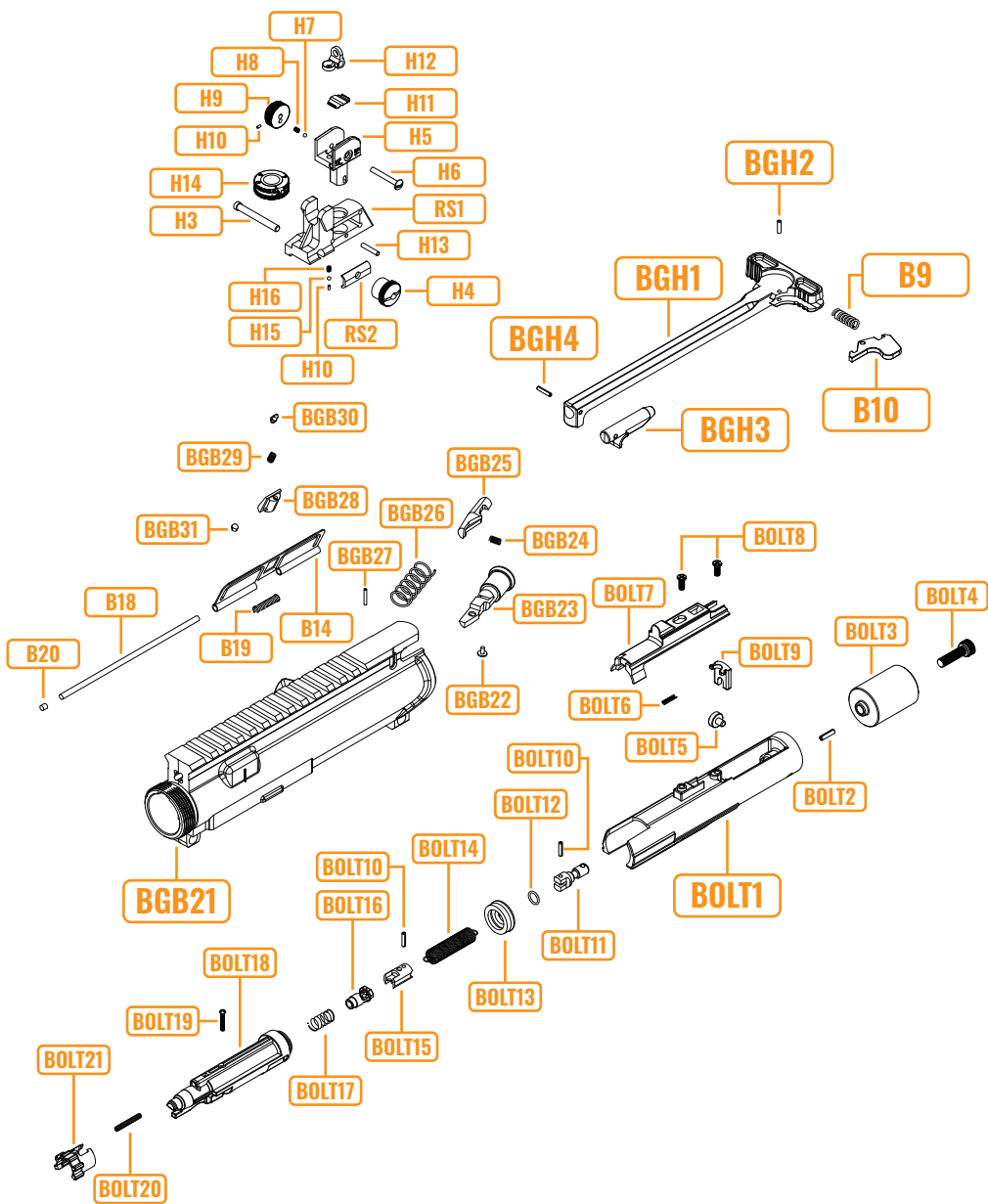
Assemble by following the steps opposite to disassembly when assembling ensure that the charging handle is properly seated in to the protruding section of the bolt.

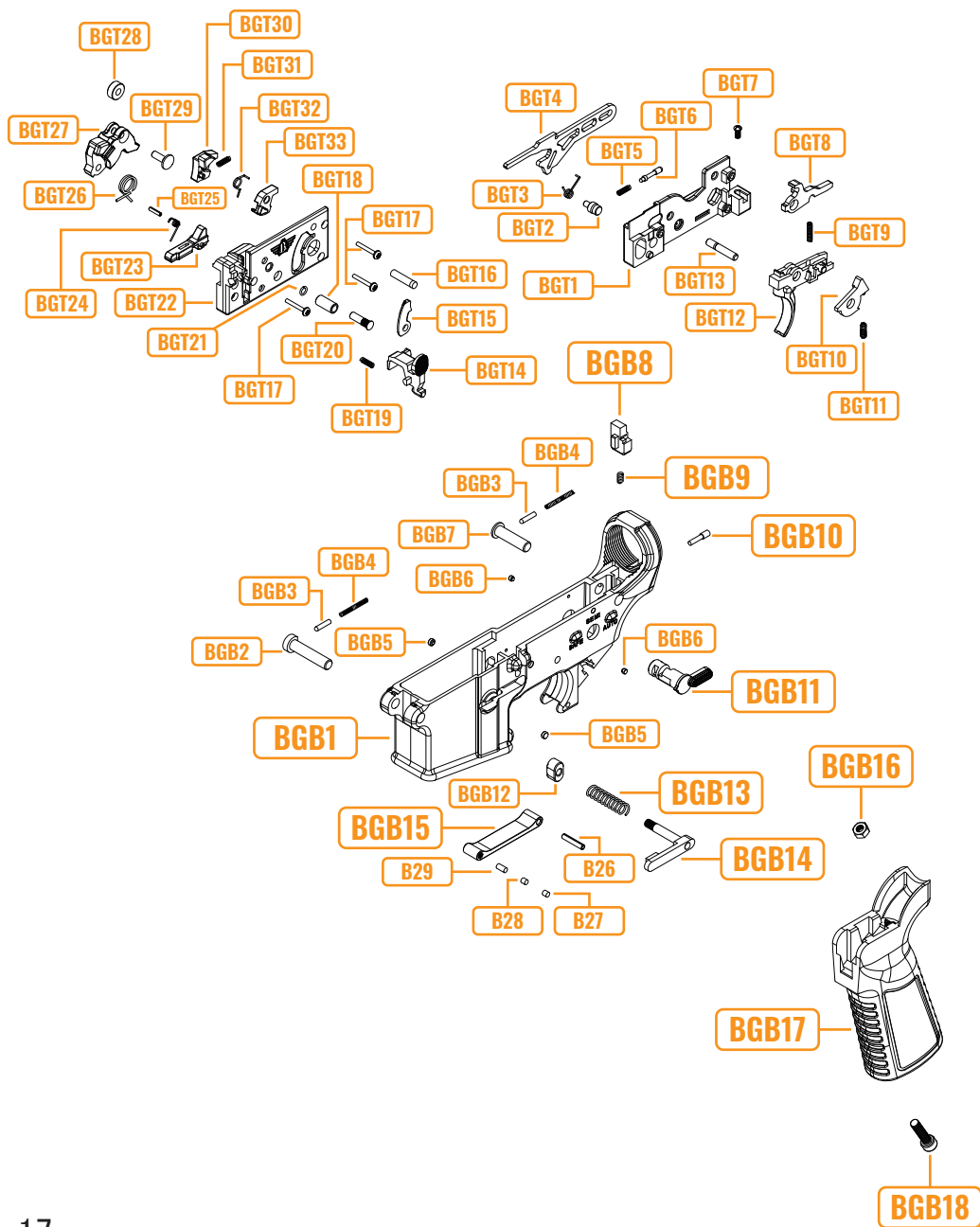
CLEANING AND MAINTENANCE

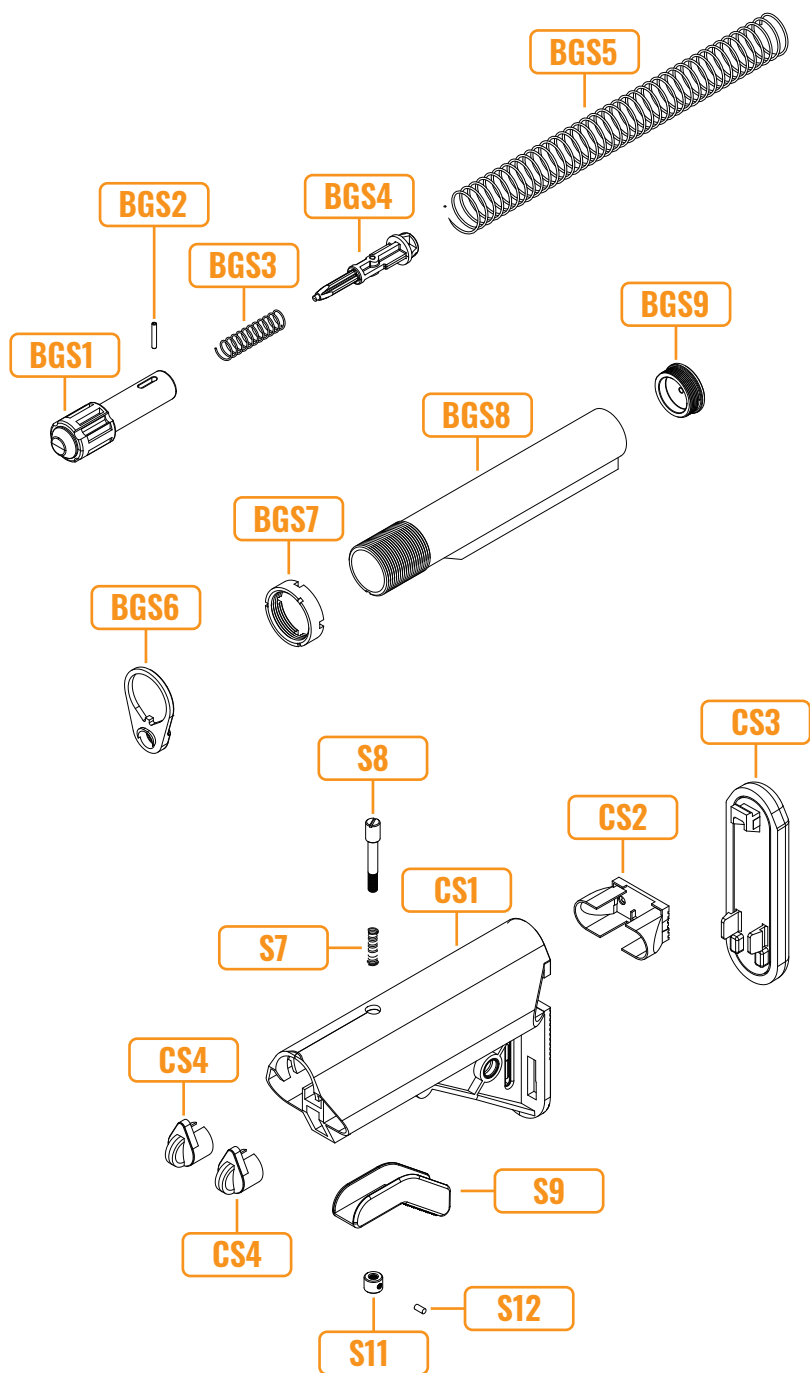


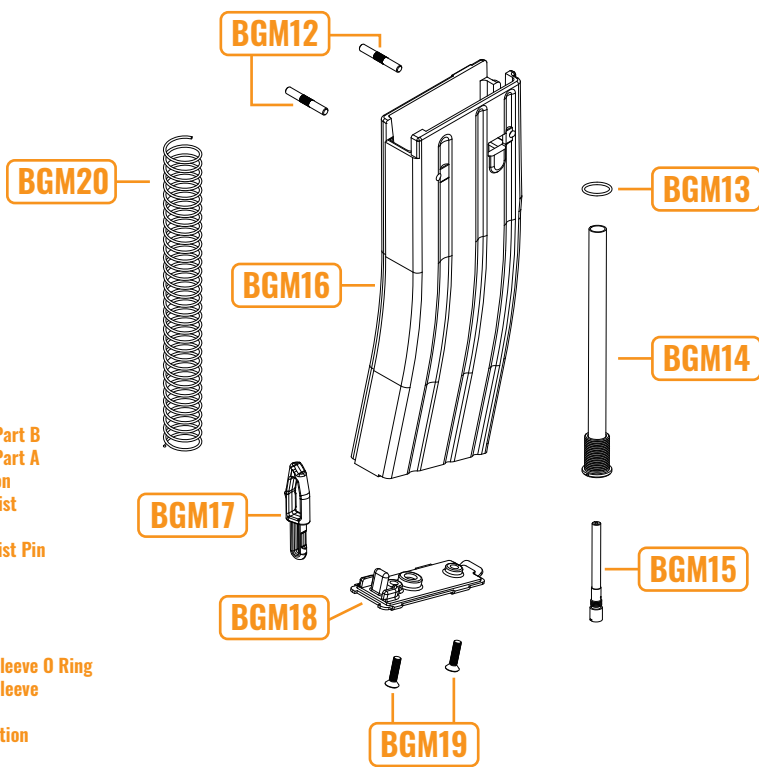
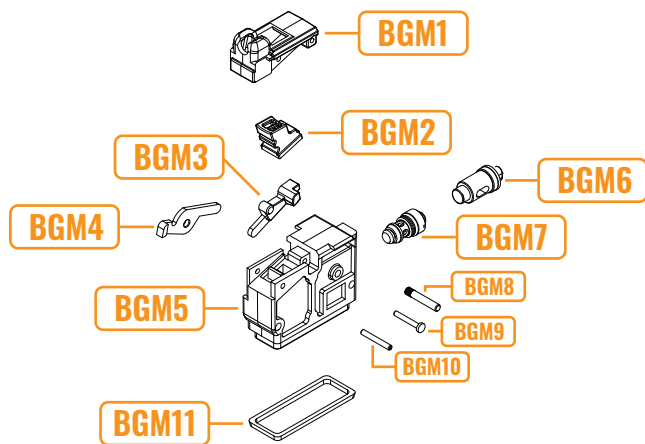
During disassembly (P13), apply oil to the indicated positions as shown. Do not use CRC, mineral oil, or similar products, as this may cause damage to the parts.











BGM1-BB Lip
 BGM2-Gas Route Seal
 BGM3-BB Follower Link Part B
 BGM4-BB Follower Link Part A
 BGM5-Chassis Top Section
 BGM6-Gas Exit Valve Assist
 BGM7-Gas Exit Valve
 BGM8-Gas Exit Valve Assist Pin
 BGM9-BB Lip Rear Pin
 BGM10-BB Lip Front Pin
 BGM11-Main O Ring
 BGM12-Chassis Top Pin
 BGM13-Gas Entry Valve Sleeve O Ring
 BGM14-Gas Entry Valve Sleeve
 BGM15-Gas Entry Valve
 BGM16-Chassis Main Section
 BGM17-BB Follower
 BGM18-Chassis Bottom Section
 BGM19-Chassis Bottom Section Screw(M3)
 BGM20-Magazine Spring

SR1-Top Tactical Rail
 SR2-Lower Tactical Rail
 F1-Flash Hider
 F2-Flash Hider Washer
 F3-Flash Hider Spring
 F4-Set Screw x2(M3 x 4)
 F5-Front Sight Housing
 F6-Front Sight Housing Pins x2
 F8-Front Sight Spring
 F9-Front Sight Plunger
 F10-Front Sight
 F16-Handguard End Cap"Front"
 F17-Gas Tube
 F21-Barrel Nut
 F22-Delta Ring
 F23-Weld Spring
 F24-Barrel Snap Ring
 CS1-Crane Stock Housing
 CS2-Crane Stock Butt Cover
 CS3-Crane Stock Butt Plae
 CS4-Crane Stock Front Cover
 S7-Stock Bolt Spring
 S8-Stock Bolt
 S9-Stock Lever
 S11-Lever Retainer
 S12-Lever Retainer Set Screw
 RS1-SOPMOD Rear Sight Housing
 RS2-SOPMOD Sight Locking Plate
 H3-Sight Knob Pin

H4-Sight Knob
 H5-Rear Sight Housing
 H6-Rear Sight Windage Screw
 H7-Windage Knob Spring
 H8-Windage Knob Plunger
 H9-Windage Knob
 H10-Windage Knob Set Screw
 H11-Leaf Spring
 H12-Peep Sight
 H13-Elevation Knob Pin
 H14-Elevation Knob
 H15-Elevation Knob Bead
 H16-Elevation Knob Spring
 BGS1-Buffer Spring Guide Part A
 BGS2-Buffer Pin
 BGS3-Buffer Guide Spring
 BGS4-Buffer Spring Guide Part B
 BGS5-Buffer Spring
 BGS6-QD Sling Swivel Base
 BGS7-Stock Tube Castle Nut
 BGS8-Stock Tube
 BGS9-Stock Tube End Cap

BOLT1-Bolt
 BOLT2-Bolt Pin
 BOLT3-Bolt Part B
 BOLT4-Bolt End Screw(M5)
 BOLT5-Bolt Roller
 BOLT6-Bolt Carrier Spring
 BOLT7-Bolt Carrier
 BOLT8-Bolt Carrier Screw(M3) x2
 BOLT9-Firing Pin Stopper
 BOLT10-Piston Return Spring Securing Pin
 BOLT11-Firing Pin
 BOLT12-Firing Pin O-Ring
 BOLT13-Piston Head
 BOLT14-Piston Return Spring
 BOLT15-Piston Valve Stopper
 BOLT16-Piston Valve
 BOLT17-Piston Valve Spring
 BOLT18-Piston
 BOLT19-Piston Screw(M2.6x16)
 BOLT20-Piston Locking Lug Spring
 BOLT21-Piston Locking Lug

BGB1-Lower Reciever
 BGB2-Pivot Pin
 BGB3-Pivot Pin Stopper x2
 BGB4-Pivot Pin Stopper Spring x2
 BGB5-Decoration Pin
 BGB6-Decoration Pin
 BGB7-Take Down Pin
 BGB8-Buffer Stop
 BGB9-Buffer Stop Spring
 BGB10-Buffer Guide Retainer Pin
 BGB11-Selector
 BGB12-Magazine Release Button
 BGB13-Magazine Release Button Spring
 BGB14-Magazine Catch
 BGB15-Tigger Guard
 BGB16-Grip Securing nut(M5)
 BGB17-Grip
 BGB18-Bolt End Screw(M5)
 BGB19-Inner Barrel
 BGB20-Outer Barrel
 BGB21-Upper Receiver
 BGB22-Forward Assist Screw(M2)
 BGB23-Forward Assist
 BGB24-Forward Assist Knob B Spring
 BGB25-Forward Assist Lever
 BGB26-Forward Assist Spring
 BGB27-Forward Assist Pin
 BGB28-Ejection Port Cover Lock Cover Set
 BGB29-Ejection Port Cover Lock Spring
 BGB30-Ejection Port Cover Lock Plunger
 BGB31-Ejection Port Cover Lock Parts B

BGH1-Charging Handle
 BGH2-Charging Handle Latch Pin
 BGH3-Damper
 BGH4-Damper Pin
 BGH5-Hop-Up Chamber Left
 BGH6-Hop-Up Chamber Right
 BGH7-O Ring(10.0x1)
 BGH8-O Ring(6.0x1)
 BGH9-HOP Rubber
 BGH10-HOP-UP Rubber Nub
 BGH11-HOP-UP Press Down Block
 BGH12-E Buckle(E2.0)
 BGH13-HOP-UP Press Down Nut
 BGH14-HOP-UP Press Down O Ring(0.74x1.02)
 BGH15-HOP-UP Set(Special Screw M3)
 BGH16-O Ring(6.0x1)

BGT1-Inner Frame-Right Side
 BGT2-Bolt Catch Part C
 BGT3-Torsion Spring
 BGT4-Bolt Catch Plate B
 BGT5-Fire Selector Clicker Spring
 BGT6-Fire Selector Clicker
 BGT7-Inner Frame Securing Screw(M3)
 BGT8-Disconnecter
 BGT9-Disconnecter Spring
 BGT10-Trigger Part B
 BGT11-Trigger Part B Spring
 BGT12-Trigger
 BGT13-Trigger Shaft Pin
 BGT14-Bolt Catch
 BGT15-Tigger ARM
 BGT16-Sear Pin
 BGT17-Inner Frame Screw-Left Side(M2.5) x3
 BGT18-Trigger Shaft
 BGT19-Bolt Catch Spring
 BGT20-Hammer Pin
 BGT21-Trigger Shaft C Ring
 BGT22-Inner Frame-Left Side
 BGT23-Valve Klocker
 BGT24-Valve Klocker Spring
 BGT25-Valve Klocker Pin
 BGT26-Hammer Spring
 BGT27-Hammer
 BGT28-Hammer Roller
 BGT29-Hammer Roller Shaft
 BGT30-Full Auto Sear
 BGT31-Semi/Full Auto Sear Spring
 BGT32-Sear Spring
 BGT33-Semi Auto Sear
 B9-Charging Handle Latch Spring
 B10-Charging Handle Catch
 B14-Ejection Port Cover
 B18-Ejection Port Cover Pin
 B19-Ejection Port Cover Spring
 B20-Pin Retaining Ring
 B26-Trigger Guard
 B27-Trigger Guard Screw
 B28-Trigger Guard Plunger Spring
 B29-Trigger Guard Plunger



MANUFACTURED BY BOLT AIRSOFT
BOLT BRSS [®]
SHINING SPIRIT TRADING CO.,LTD.

MADE IN
TAIWAN

+886-2-8601-9158 info@bolt.tw

No.207, Wenhua 1st Rd., Linkou Dist., New Taipei
City 244, Taiwan(R.O.C.).

