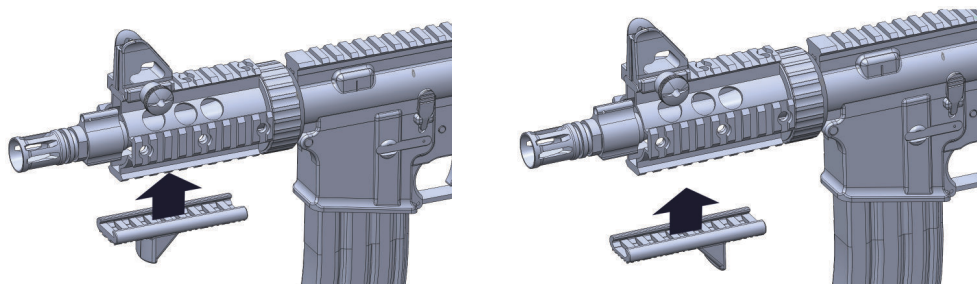
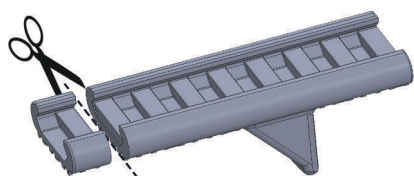


PMC SERIES

ADDITIONAL MANUAL



Handstop can place forward and back-forward



Handstop Adjustment Guide

1. Measure the cut off length for suitable position.

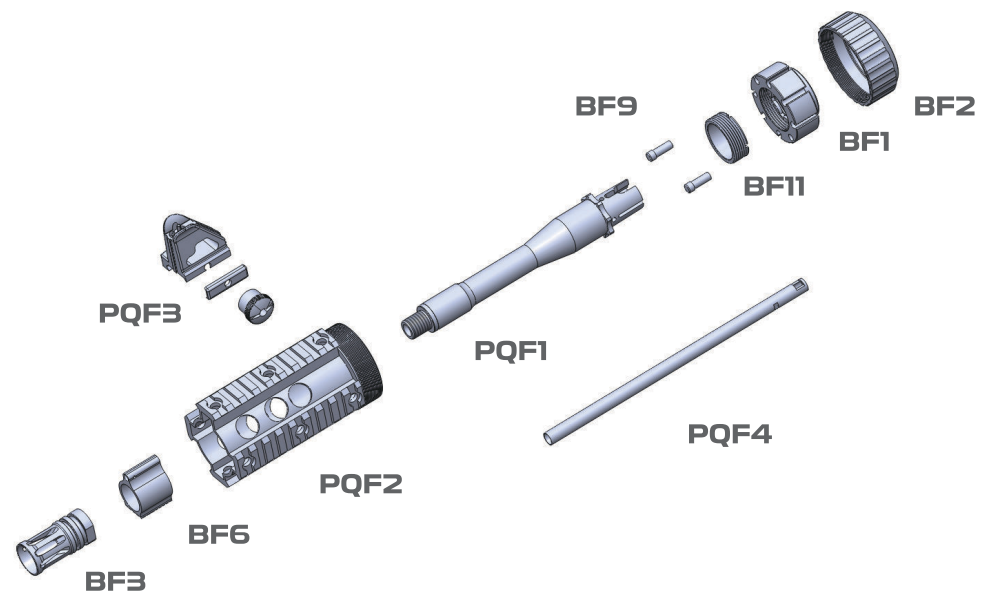
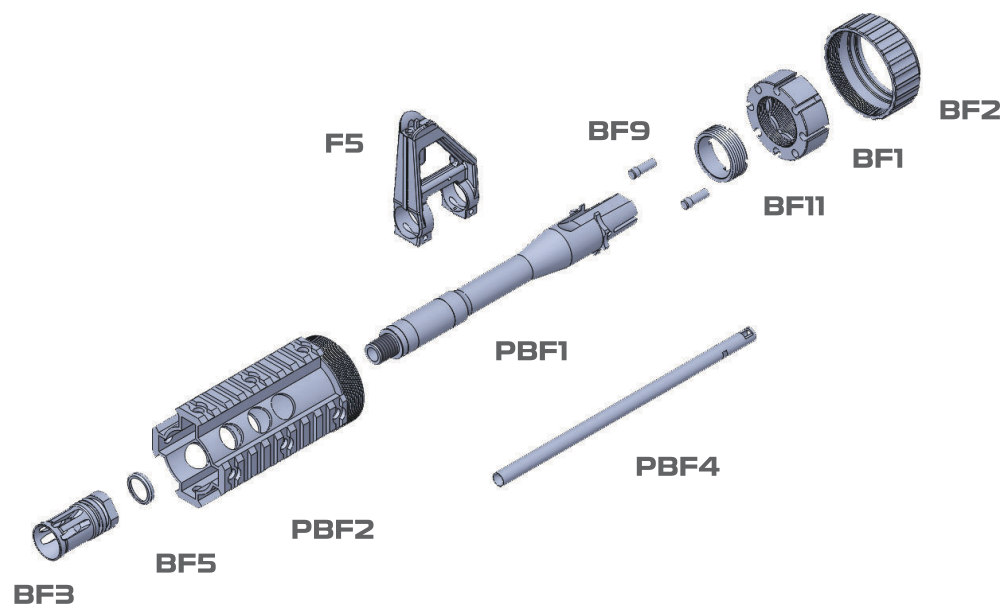
2. Use cutting tool to cut off unnecessary part.

ABOVE
18+



BOLT BRSS®





BF1 Barrel Nut

BF2 Delta Ring

BF3 Flash Hider

BF1 Barrel Nut

BF2 Delta Ring

BF3 Flash Hider

BF5 Flash Hider Washer

BF9 Lock Pin

F5 Front Sight Housing

BF6 Gas Block

BF9 Lock Pin

PQF1 Outer Barrel

PBF1 Outer Barrel

PBF2 R.A.S. Rail 5"

PBF4 Inner Barrel

PQF2 R.A.S. Rail 5"

PQF3 Front Sight

PQF4 Inner Barrel

BF11 Outer Barrel Screw Wrench

BF11 Outer Barrel Screw Wrench